



# SOSCOL JUNCTION

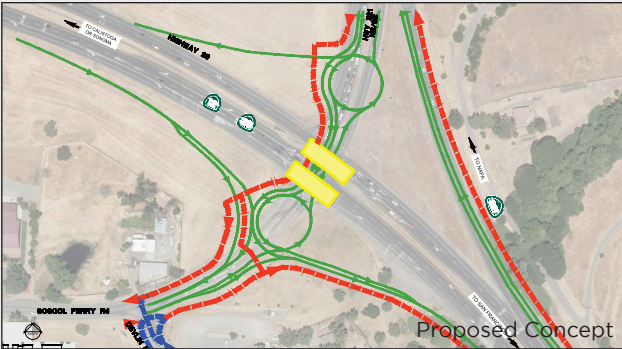
Napa County attracts more than five million visitors annually. Coupled with population growth in Solano and Sonoma Counties, Highways 29 and 221 have become major interregional highways serving residents, visitors, workers, and freight.

The existing conditions of the intersection result in 1.365 million hours of delay per year.\* Soscol Junction is vital to the local agriculture and hospitality economy.

The Soscol Junction project will greatly reduce peak hour queue times by 90%, raising the level of service to an A in the AM peak and B in the PM peak commute period. The project will eliminate head-on collisions by 90% and will reduce all collisions by 35-48% per year. The project will also reduce CO2 emissions by 94,000 tons over 20 years.

## ONE SOLUTION

The Soscol Junction project will alleviate congestion and improve operations at the Highway 29/221/Soscol Ferry Road intersection in south Napa County. The proposed alternative incorporates roundabouts underneath Highway 29 to allow for continuous north-south movement of vehicles. The two roundabouts will be located on Highway 221 north of Highway 29 and on Soscol Ferry Road south of Highway 29. The roundabouts will allow drivers to turn on and off the highways. The project will also construct 1,200 feet of class 1 facility to accommodate bicycles and pedestrians through the intersection.



PROJECT COST (\$1,000s)			FUNDING PLAN (\$1,000s)		SCHEDULE	
PHASE	YEAR	COST	STIP	\$30,500	Begin Design	April 2020
Environmental	18/19	\$6,100	Local Developer	3,700	End Design	August 2021
PS&E	19/20	5,100	LPP Formula	500	Start Construction	June 2022
Right-of-Way	20/21	300	SCCP	19,300	End Construction	October 2024
Construction	21/22	36,800	TOTAL	\$54,000		
Construction Support		5,700				
TOTAL		\$54,000				

Questions? Contact Danielle Schmitz: [dschmitz@nvta.ca.gov](mailto:dschmitz@nvta.ca.gov)