

Accessible Transportation Needs Assessment

Stakeholder Working Group

May-June 2024

What are we covering today?

- 1 Introductions
- 2 What we've learned
- 3 What comes next





Introductions

Introductions

In the Zoom chat, please put your **name**, **organization**, and your thoughts on the following:

- **What outcomes would you like to see from this study?** (e.g., What would you consider “success” when this project is complete?)

We Put People First

Transportation systems that promote mobility, equity, sustainability, health, and economic development



Transit



Urban Corridors



Active Transportation and Safety



Cities and Streets



Parking and Demand Management



Mobility Management, Access, and Planning

Project Purpose

- This project, known as ATNA, builds off past efforts throughout the county and similar plans
- Partnership between NVRTA and Napa County to address transportation needs for seniors and persons with disabilities
- This study will:
 - Identify mobility barriers for seniors and individuals with disabilities throughout Napa County
 - Create recommendations for achieving equitable and improved transportation options for these populations





What we've learned

What we've reviewed

- Existing planning documents
- Existing transportation services
- 2023 Accessibility Survey responses
- Replica Data
- NFTA ridership data
 - Common paratransit pickup and dropoff points
 - Primary locations outside of VineGo service area
 - Stops with high numbers of lift deployment
- Previous ATNA work



YO
UN
TV
IL
LE



BEE LINE SHUTTLE

What we've reviewed - VineGo Service

- On-demand, ADA paratransit
 - Service provided in ¾ mile around NVTA Vine fixed-route transit
- Largest provider of services for older adults and people with disabilities in the County

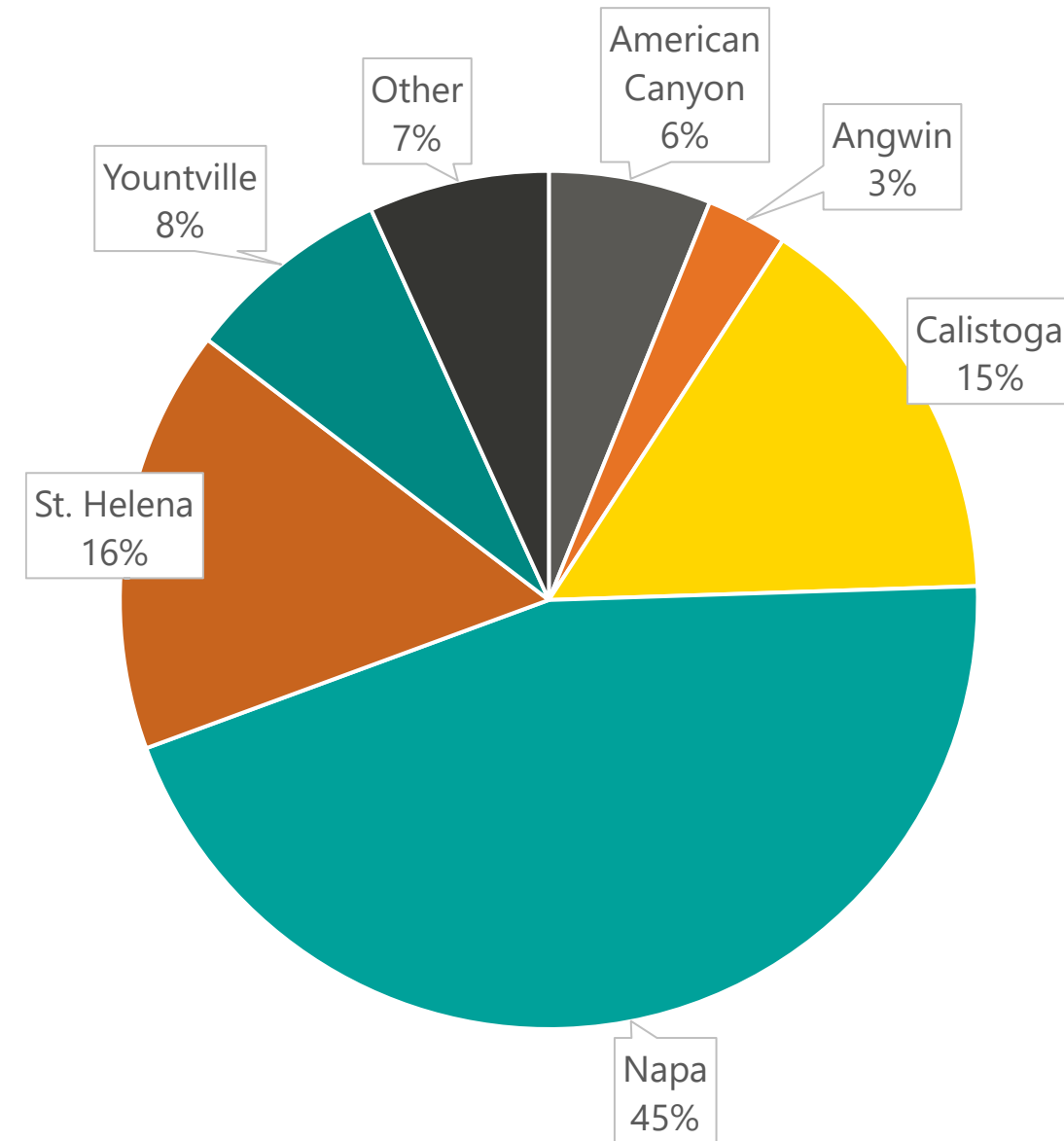


Rides Provided by VineGo in FY23-24

| Month | Number of Rides |
|----------------|-----------------|
| July 2023 | 1,015 |
| August 2023 | 1,529 |
| September 2023 | 1,384 |
| October 2023 | 1,166 |
| November 2023 | 1,344 |
| December 2023 | 1,216 |
| January 2024 | 1,320 |
| February 2024 | 1,295 |
| March 2024 | 1,417 |
| April 2024 | 1,466 |

What we've reviewed – Accessibility Survey

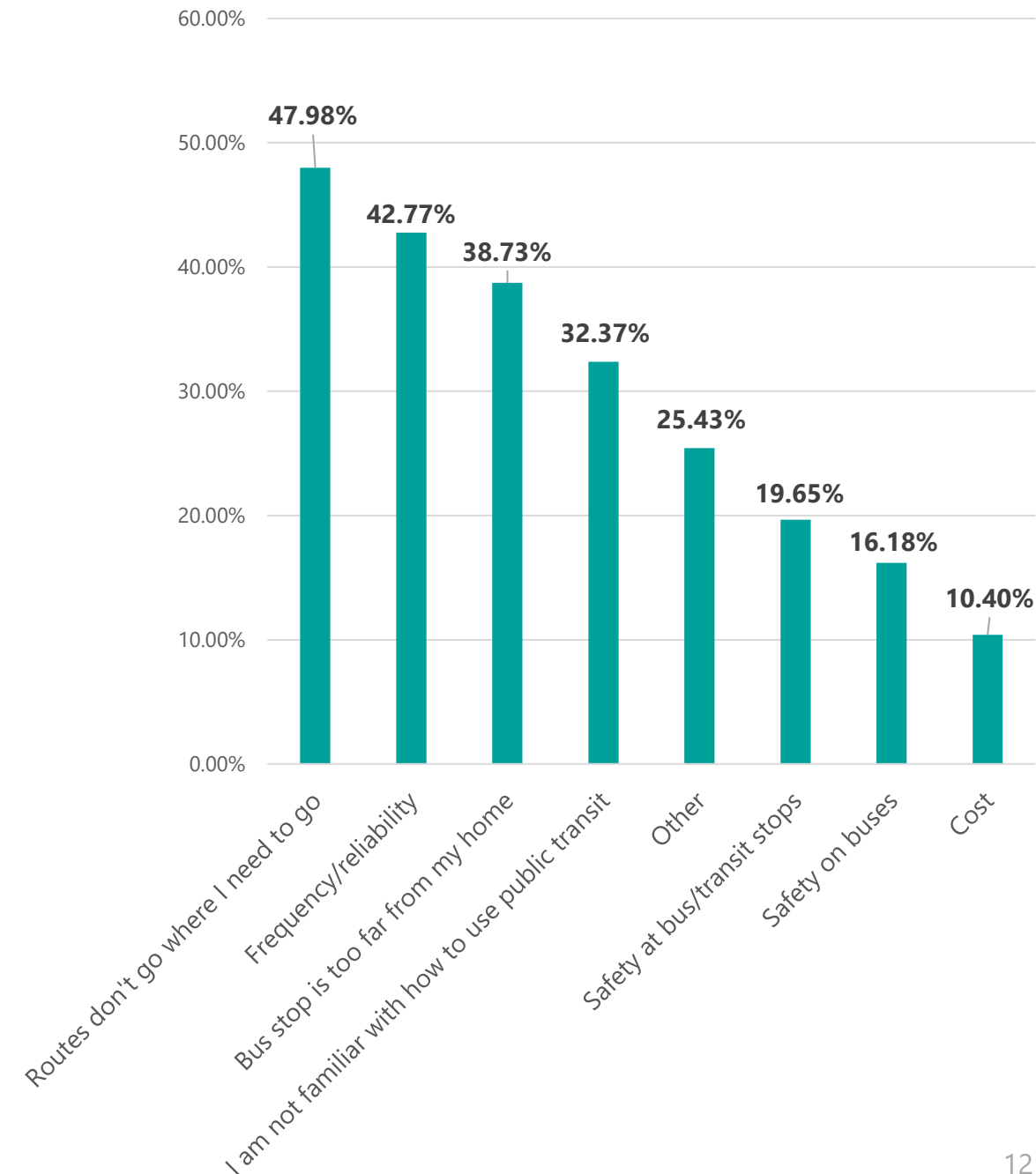
- 339 responses between January 15 and March 17, 2023
- Who did we hear from?
 - 84% of respondents were over 51 years old
 - 73% of respondents identified as female
 - 74% of respondents identified as white and 12% identified as Hispanic or Latino
 - Majority of respondents live in areas served by some level of fixed route or paratransit
- Who didn't we hear from?
 - Non-white, non-English speaking residents
 - Residents in unincorporated areas



What we've reviewed – Accessibility Survey

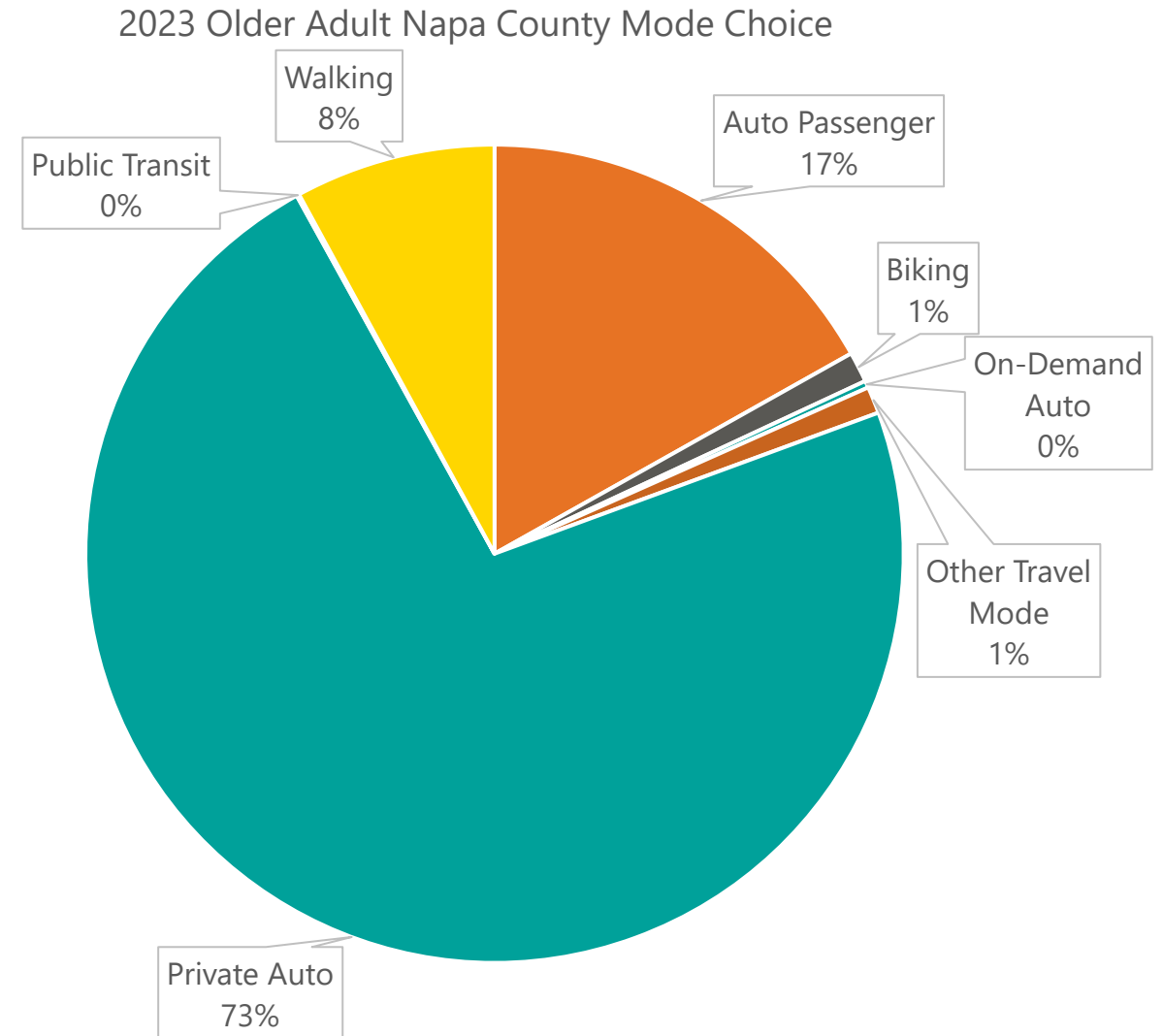
- The largest barrier(s) to using public transportation were routes and destinations, frequency of bus schedules, location of bus stops, and perceived safety issues.
- Desire for more opportunities for on-demand and point-to-point services
- Most likely destination for trips on public transportation was medical appointments and visits (57% of all trips)

What are the biggest barriers to using public transit?



What we've reviewed - Replica Data

- Replica data shows trips by type, time of day, mode share, and origins and destinations
- Majority of older adults in Napa County either drive themselves or have someone else drive them
- Other than driving, walking is the most common mode choice
- Less than 0.1% of older adults across Napa County use public transit
- Type of transportation taken (mode choice) is similar in unincorporated Napa County as the rest of Napa County

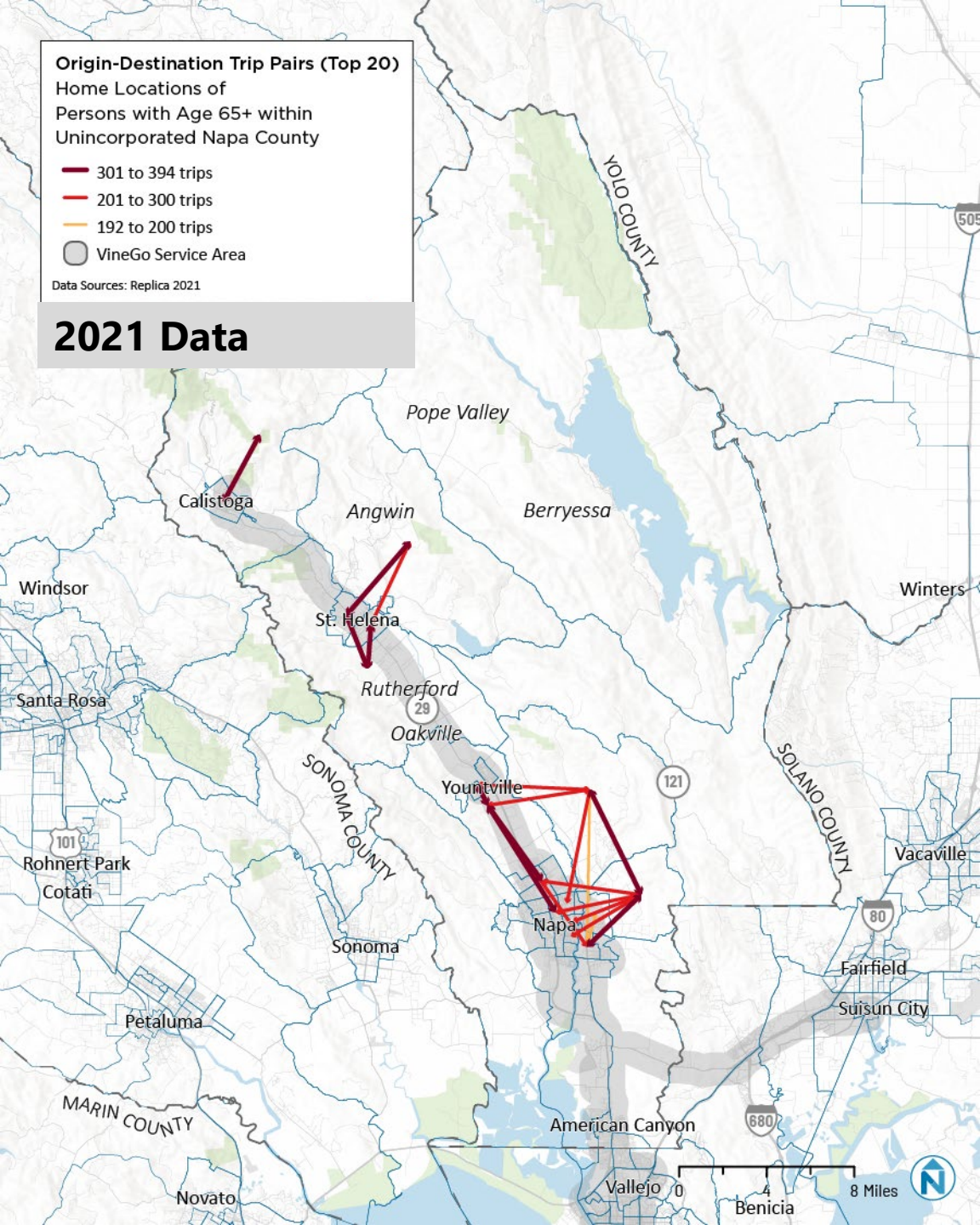


Origin-Destination Trip Pairs (Top 20)
Home Locations of
Persons with Age 65+ within
Unincorporated Napa County

- 301 to 394 trips
- 201 to 300 trips
- 192 to 200 trips
- VineGo Service Area

Data Sources: Replica 2021

2021 Data

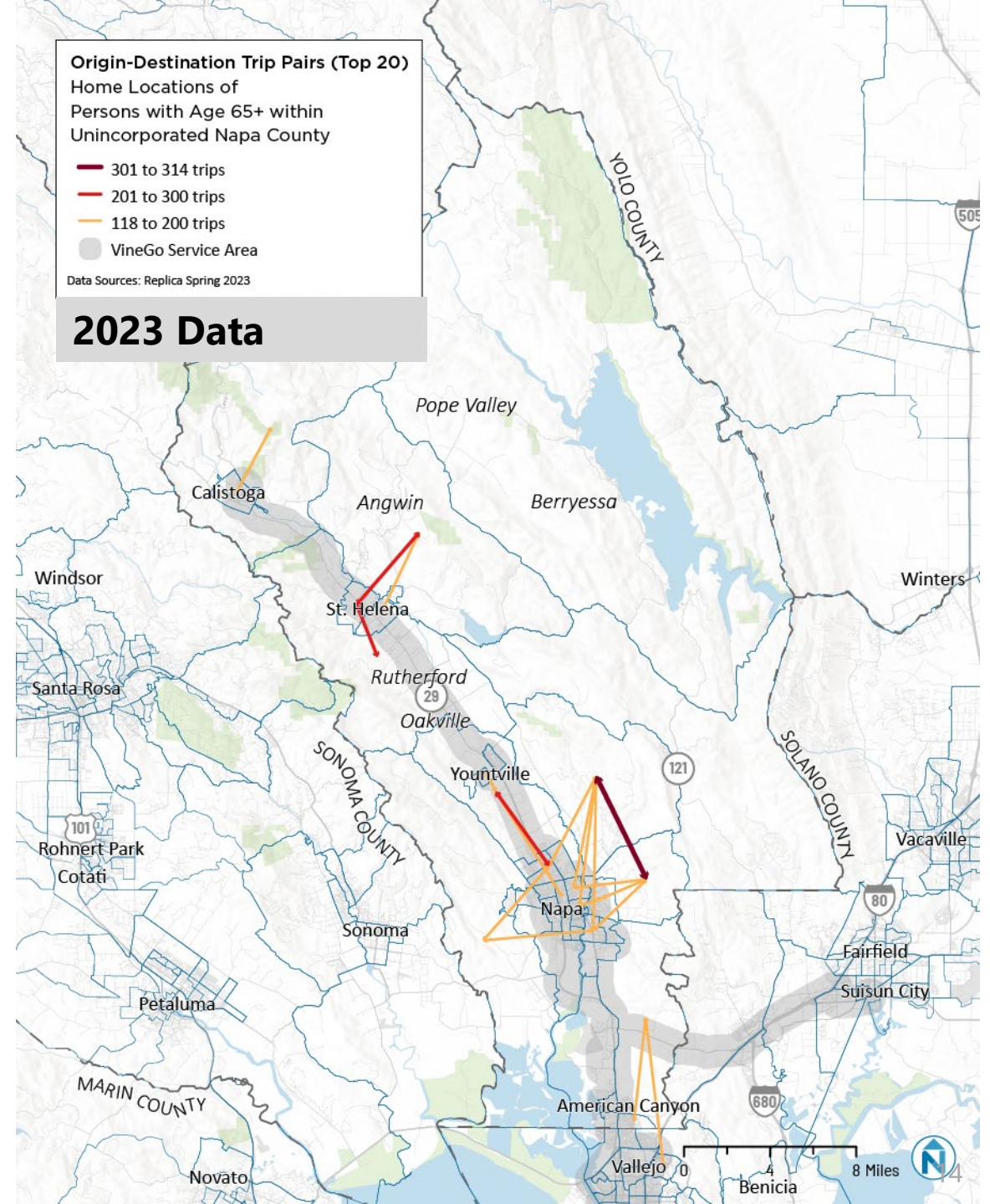


Origin-Destination Trip Pairs (Top 20)
Home Locations of
Persons with Age 65+ within
Unincorporated Napa County

- 301 to 314 trips
- 201 to 300 trips
- 118 to 200 trips
- VineGo Service Area

Data Sources: Replica Spring 2023

2023 Data



Observations

Older adults focus their travel within their community or to necessary trips

- Most popular trips from homes in unincorporated Napa County are not particularly far – primarily heading into the nearest town
- For trips within the neighborhood/Census tract, walking trips make up the majority
- Medical trips and shopping are dominant trip purposes, but there's also a lack of medical facilities in Napa County



Observations

At the same time, past plans highlighted barriers to access

- Service did not operate in locations where older adults need it
- Lack of intercounty travel options or connectivity
- Medical appointments sometimes scheduled outside of public transit service hours and areas
- Individuals felt technology barriers limited seniors from using options like Uber and Lyft and accessing information about transportation services
- Individuals felt language barriers limited them from using public transportation, even if they could get to it



Observations

Infrastructure improvements are needed

- Older adults lack safe routes to walk or roll to transit stops and other destinations
- Some transit stops themselves may need physical improvements

“Navigating the public transportation system can take up a disproportionately large amount of time and energy.”



Observations

Older adults primarily drive themselves, and their automobile use increased during COVID-19. People make this choice based on a variety of reasons and perceptions:

- Public transportation doesn't serve where they need to go
- Transit perceived as unreliable or not frequent enough
- Difficulty with transfers
- Difficulty riding due to a disability or mobility aid device
- Prefer the independence of driving
- Packages or groceries are too challenging for public transit



Did We Miss Anything?

If so, please let us know in the chat:

- What other points we should be considering
- What sources or individuals we should be learning from



Group Activity – SWOT Analysis

- Strengths, Weaknesses, Opportunities, Threats
 - **Strengths:** Advantages that are a function of the Napa County region/transportation system
 - **Weaknesses:** Disadvantages that are a function of the Napa County region/transportation system
 - **Opportunities:** Advantages of the Napa County region/transportation system in the context of the Bay Area
 - **Threats:** Disadvantages of the Napa County region/transportation system in the context of the Bay Area
- This exercise reminds you to:
 - Build on your strengths
 - Minimize your weaknesses
 - Seize opportunities
 - Counteract threats
- A SWOT analysis is most helpful if you use it to support the vision, mission, goals, and objectives you have already defined

Group Activity – SWOT Analysis

Example SWOT:

| | | Positive | Negative | |
|----------|-----------|---|---|---------|
| Internal | Strengths | <ul style="list-style-type: none"> • Diverse population with pockets of high transit propensity • Presence of major commercial transcontinental corridor • Sufficient capacity for express bus transit on regional and state roads | Weaknesses <ul style="list-style-type: none"> • High poverty; limited access to vehicles, technology, and training opportunities • Limited local supply of drivers • Low population density • Auto-dependence; very low existing transit service, especially along intercity corridors • Inconsistent condition of transportation facilities and vehicles | |
| | External | Opportunities | <ul style="list-style-type: none"> • Multiple federal funding sources • Presence of community colleges and other campuses for job training • Precedent for multi-state compacts for transit service elsewhere in the United States | Threats |



What comes next

Public Workshop

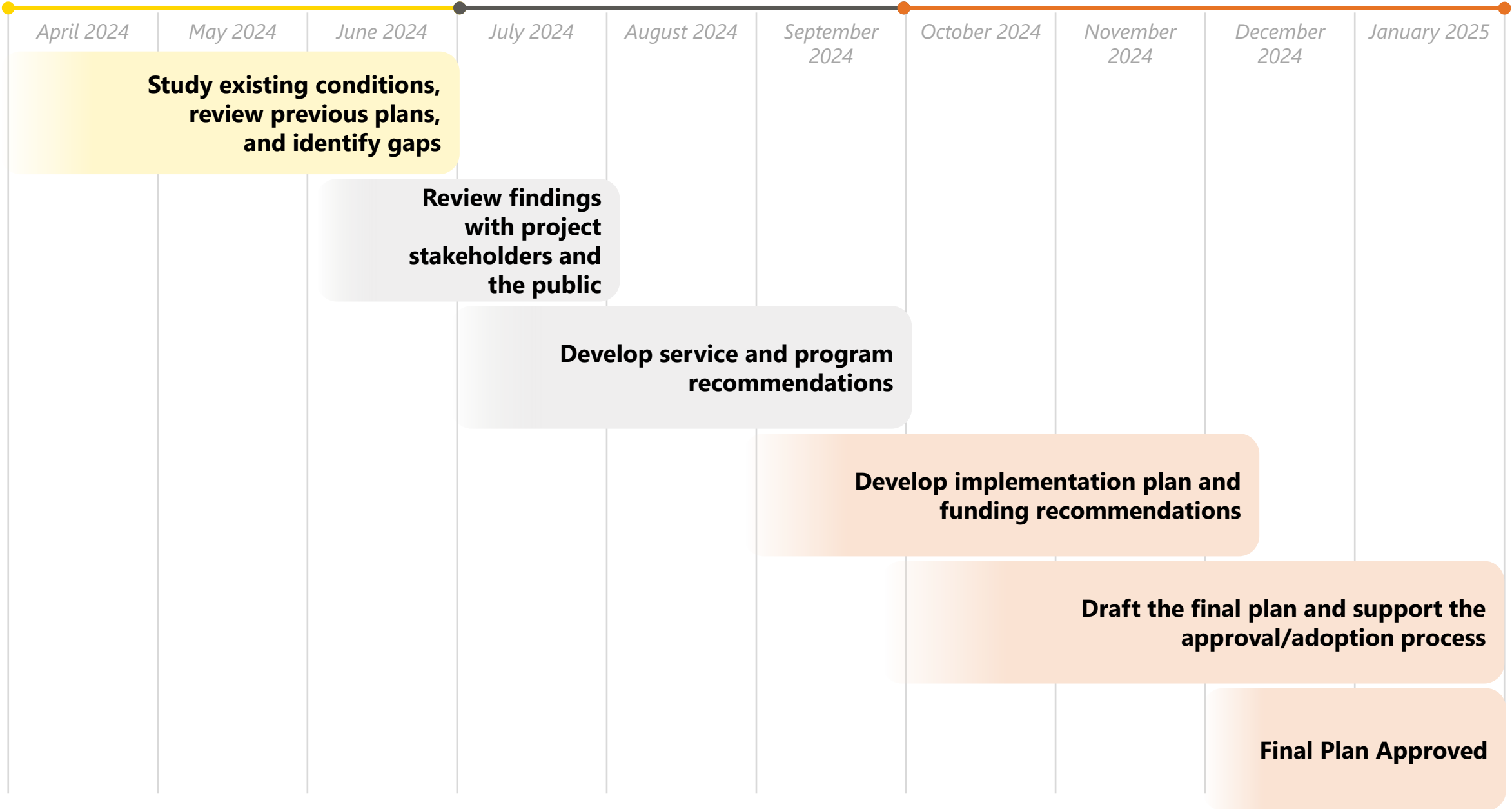
- **July 8, 2024**
 - 3pm-7pm
 - **NVTA Board Room**
- In-person open house with stations
 - Existing conditions
 - Tradeoffs and priorities
- Attendees can filter through and interact with boards and the project team throughout the time



**PHASE 1:
EXISTING CONDITIONS**

**PHASE 2:
STRATEGIES**

**PHASE 3:
IMPLEMENTATION PLAN**



Thank you!



epincusroth@nelsonnygaard.com

sconstantine@nelsonnygaard.com

narmenta@nelsonnygaard.com