

THE NAPA VALLEY

Vine Trail Project

Between Yountville and St. Helena

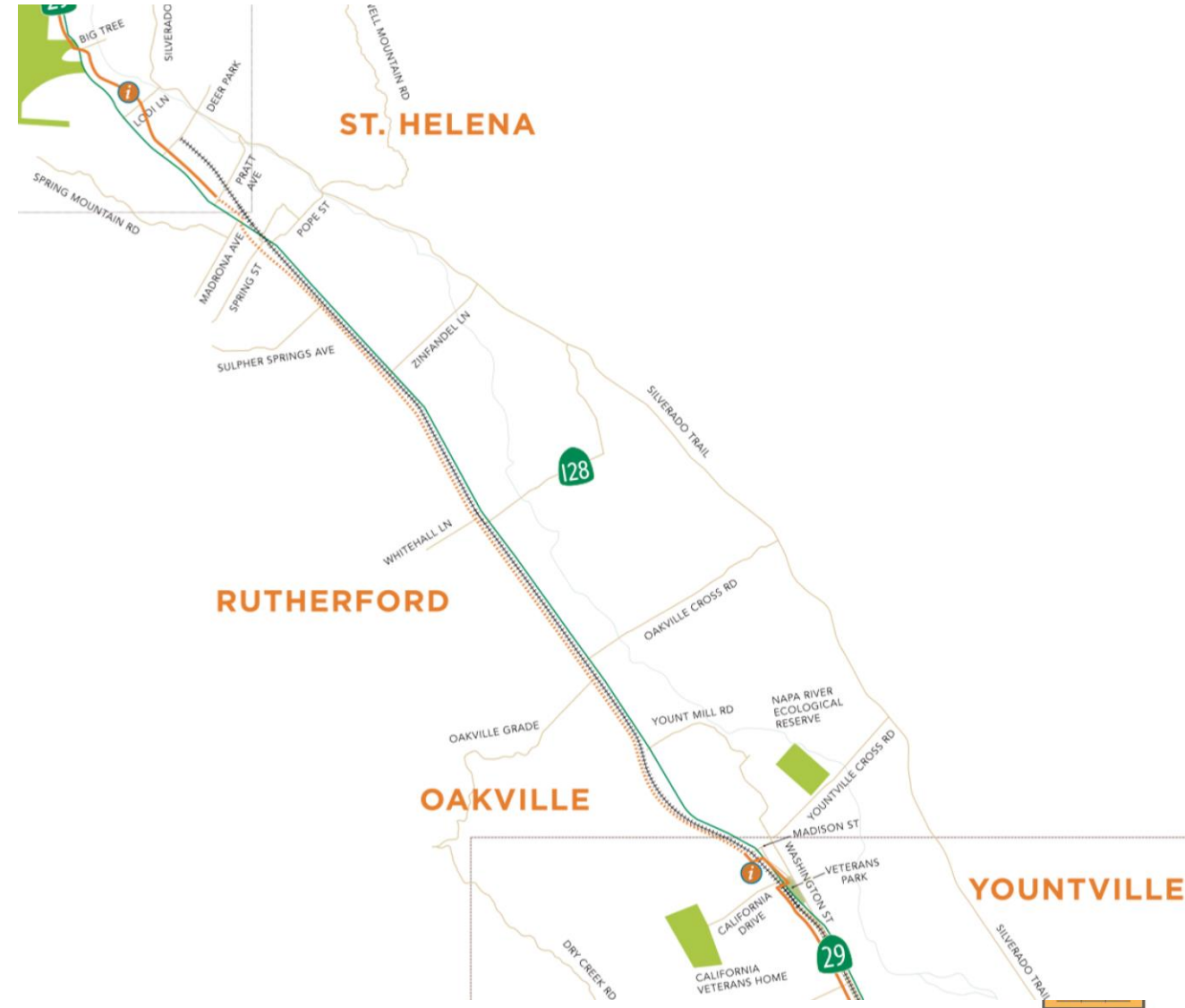
NVTA Community Advisory Committee
Wednesday March 4, 2026
Graham Wadsworth



THE NAPA VALLEY

Vine Trail Project Between Yountville and St. Helena


- 47-mile trail linking communities through Napa Valley with the Vallejo Ferry Terminal
- Safe route to schools, jobs, services and recreation
- Shift to active transportation
- Improve community health
- Provide economic opportunities



THE NAPA VALLEY

Vine Trail Project Between Yountville and St. Helena

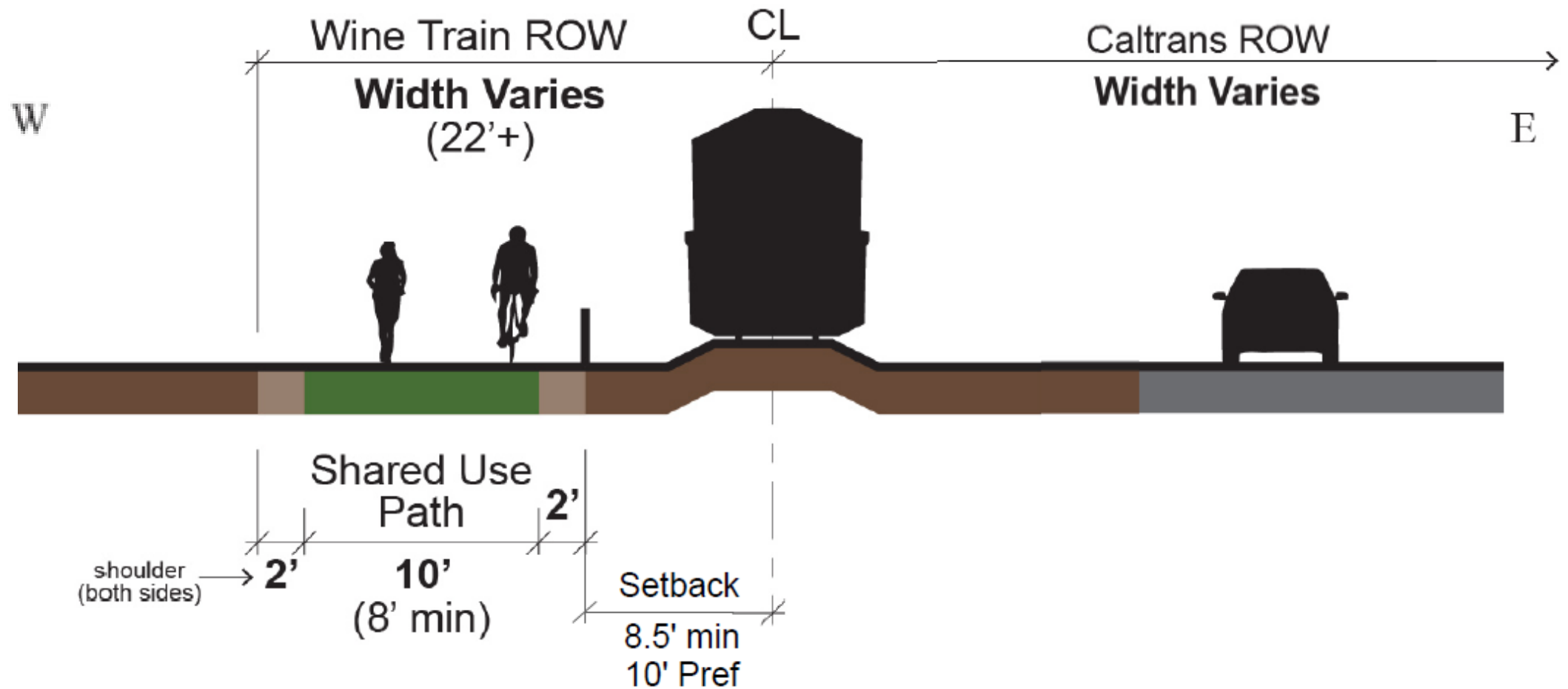


Legend	
	Class I Trail
	Class III Trail-Bike Blvd.

THE NAPA VALLEY

Vine Trail Project Between Yountville and St. Helena

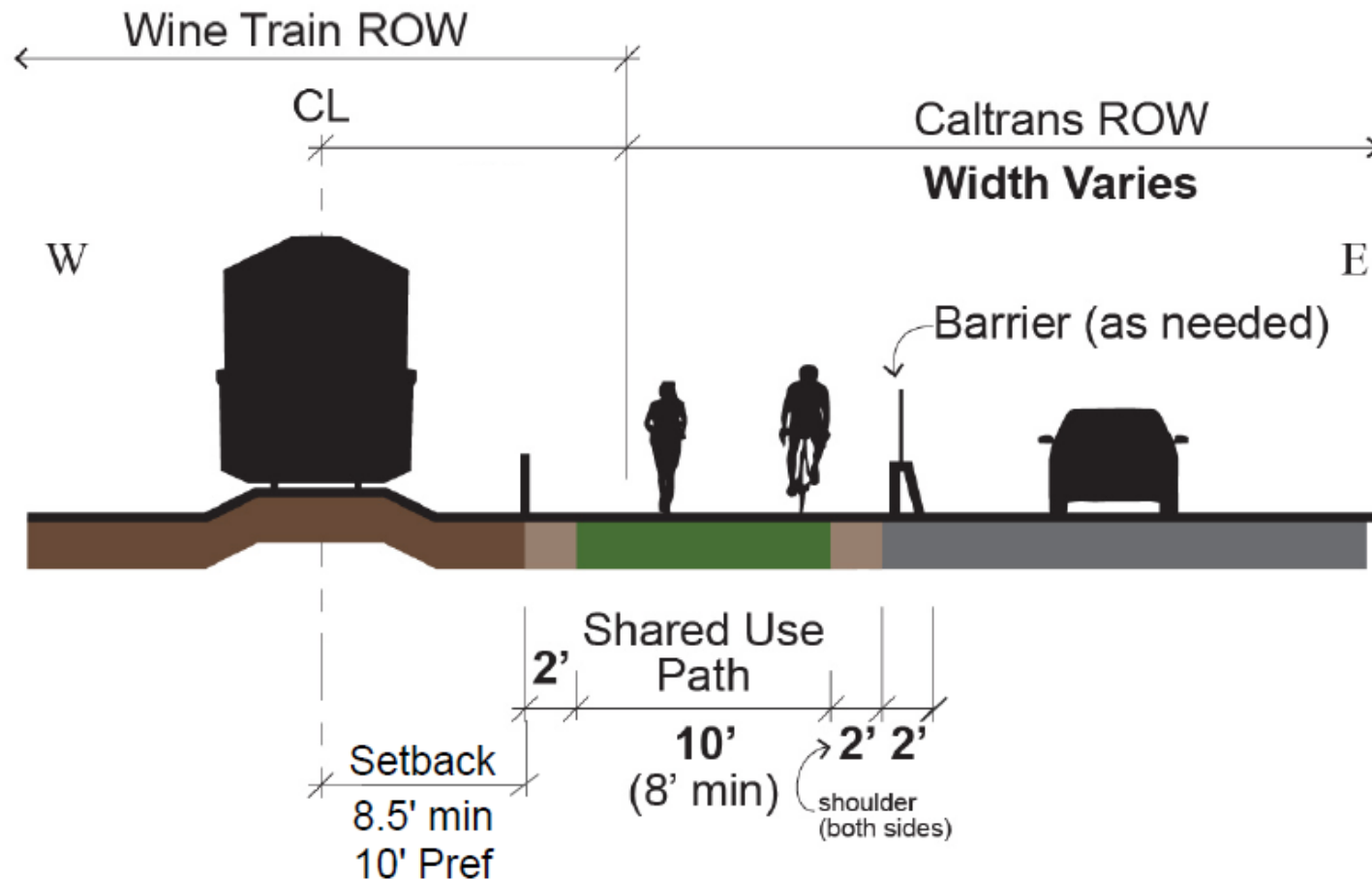
Typical Cross Section (1 of 2)



THE NAPA VALLEY

Vine Trail Project Between Yountville and St. Helena

Typical Cross Section (2 of 2)





THE NAPA VALLEY

Vine Trail Project Between Yountville and St. Helena

Where we are in the process

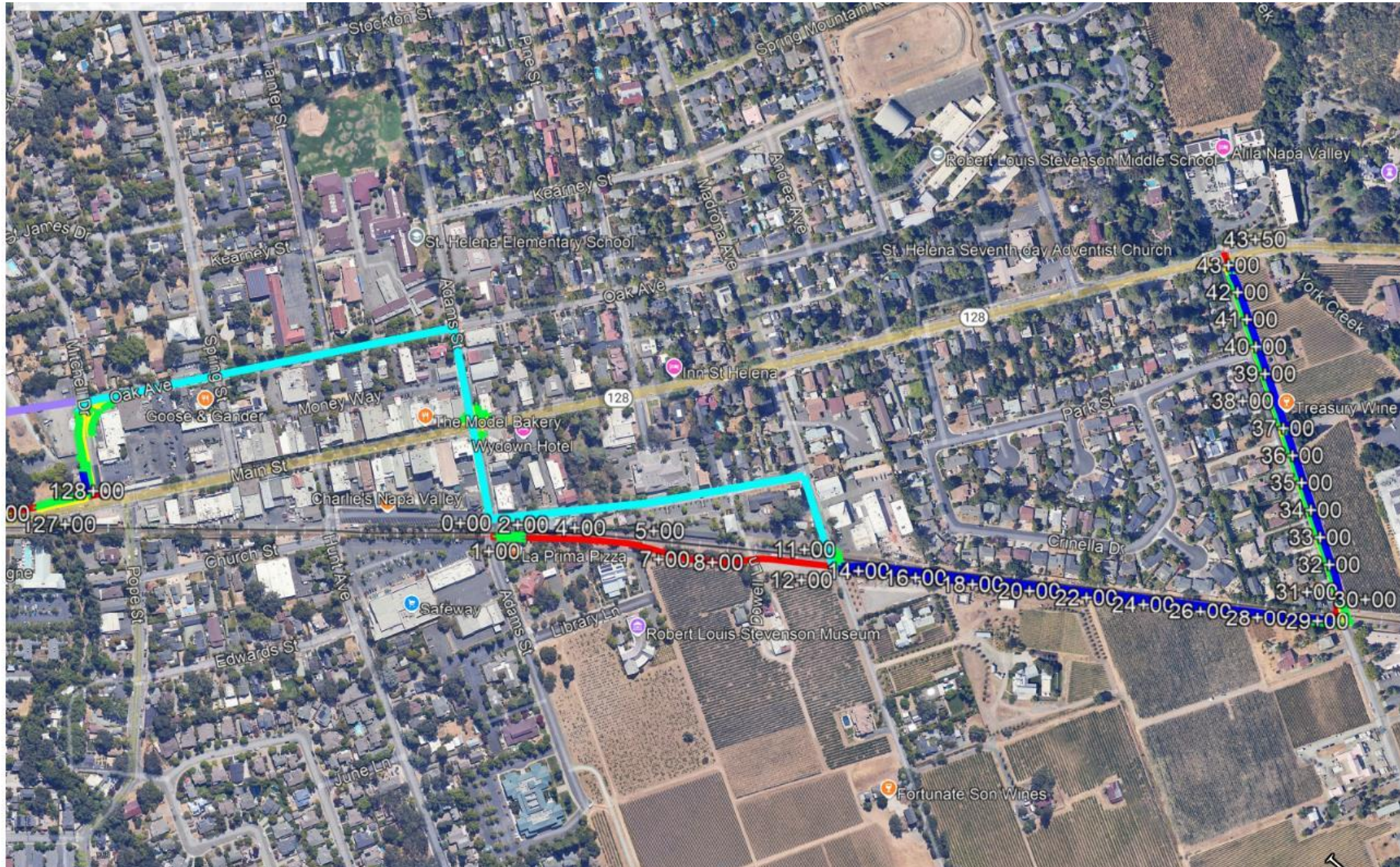
Design and Environmental

- *Alignment Alternatives 2, 3, and 4:*
 - Variations between the Madison Street and north of Dwyer Road
 - Fewer Wine Train easements required
 - Alternatives have larger construction cost and traffic impacts

THE NAPA VALLEY

Vine Trail Project Between Yountville and St. Helena

Mitchell Drive

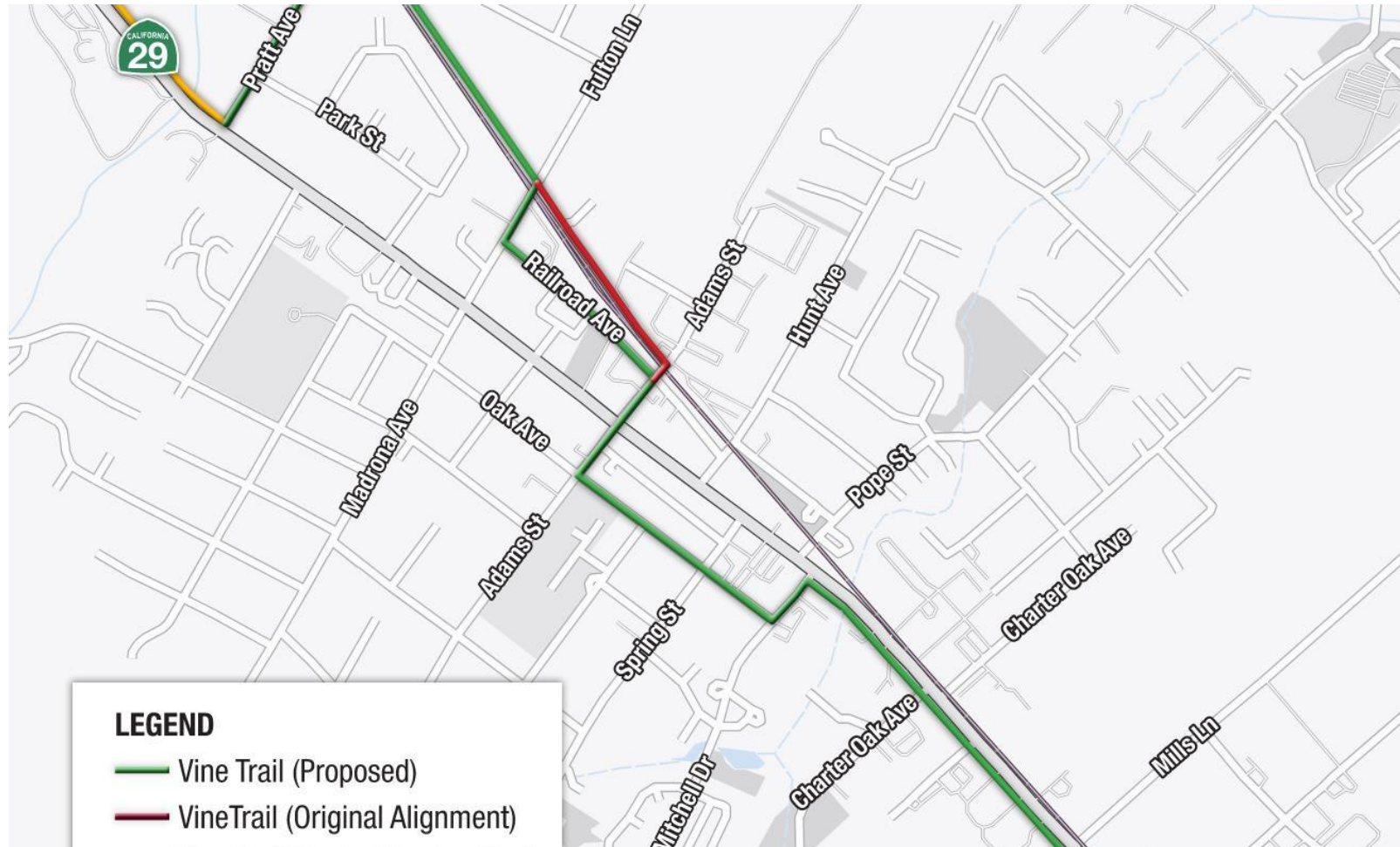


Pratt Avenue

THE NAPA VALLEY

Vine Trail Project Between Yountville and St. Helena

Design Approach for Bicycle Blvd



THE NAPA VALLEY

Vine Trail Project Between Yountville and St. Helena

Design Approach for Bicycle Blvd

RAILROAD AVE
TRAFFIC CALMING MEASURES



THE NAPA VALLEY

Vine Trail Project Between Yountville and St. Helena



Design Phases and Support Efforts

Engineering

- 35% Design (complete)
- 65% Design
- 95% Design
- 100%/Final Design
- Caltrans Approval

Supporting Activities

- Public Engagement
- Environmental Documents
- Caltrans Coordination
- Wine Train Coordination
- Property Owner Coordination
- Easement agreements
- Funding

Where we are in the process

Design and Environmental

- *Coordination with Caltrans and St. Helena on design and environmental documents*
- *Preferred alignment finalized and met with CPUC*
- *Applying for grant funding*
- *Environmental studies and reports in 2026*
- *Circulate Draft EIR in late 2026*
- *65% Design and apply for permits in 2027*
- *Final EIR in mid-2027*

THE NAPA VALLEY

Vine Trail Project Between Yountville and St. Helena

Where we are in the process

Right-of-way

- 40% in Napa Valley Wine Train right-of-way
- 40% in public right-of-way (Caltrans, County, City)
- 20% other private right-of-way:
 - 43 Required Easements (counting Wine Train)
 - 15 Optional Alignment Easements
 - 34 Landowners signed letter of support for Grant Applications

THE NAPA VALLEY

Vine Trail Project Between Yountville and St. Helena

Where we are in the process

Funding

- *Design = \$8 million*
- *Construction = \$42 million*
- *Total = \$50 million*
- *CPF earmark= \$4 million (design, environmental, and right-of-way work)*
- *NVVTC= \$750,000*
- *City of St. Helena= \$135,000*
- *Shortfall= \$45 million*

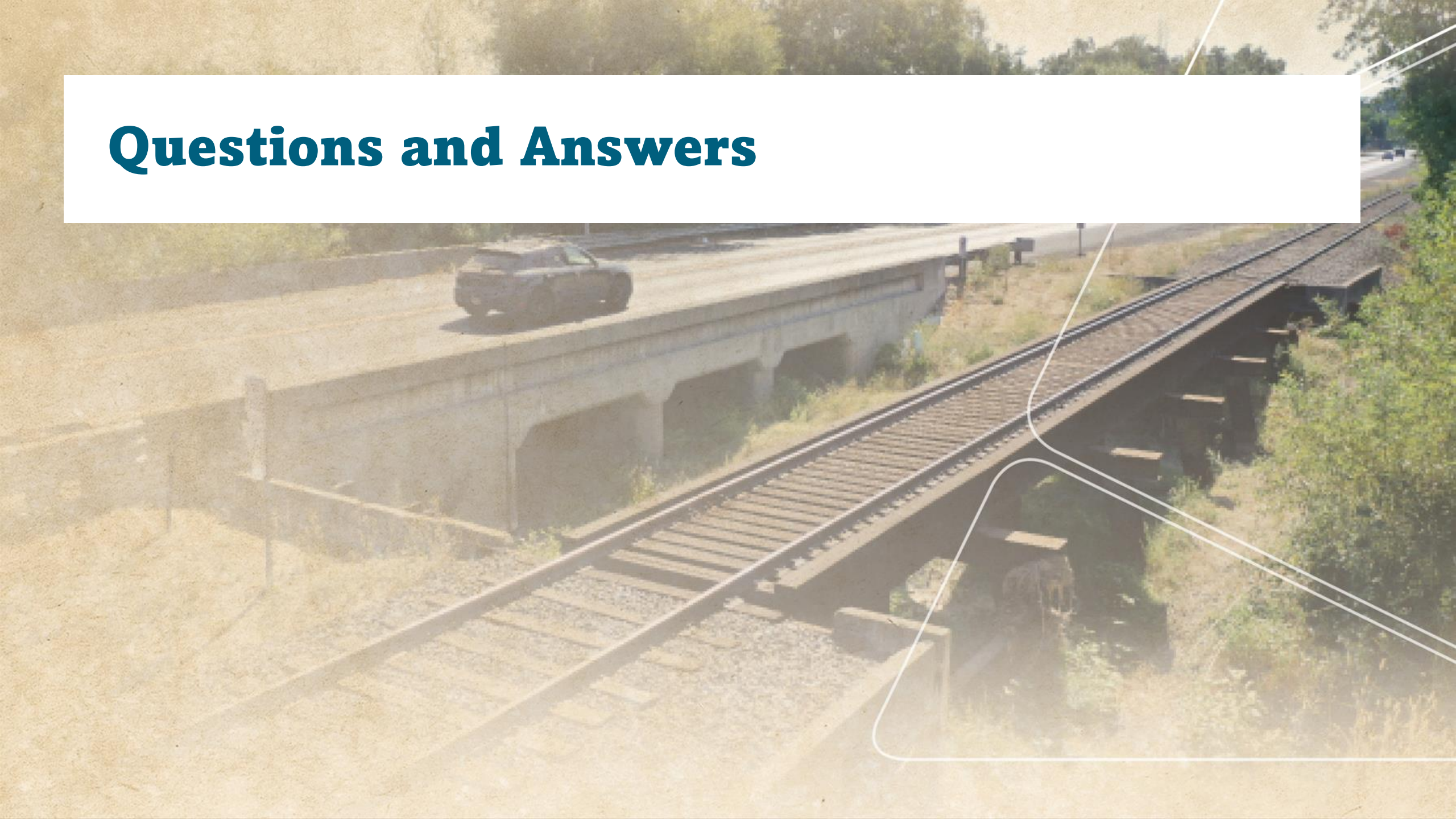
THE NAPA VALLEY

Vine Trail Project Between Yountville and St. Helena

Schedule

Milestones	Estimated Dates
Circulate Environmental Impact Report	Late 2026
Adopt Environmental Documents	Mid 2027
Right-of-Way Acquisition and Permits	Mid 2028
Caltrans Approvals and advertise for bids	Late 2028
Construction (depends on grant funding)	Spring 2029 through Summer 2030

Questions and Answers





THE NAPA VALLEY

Vine Trail Project Between Yountville and St. Helena

Yountville to St. Helena Alignment

Kimley»Horn

RSA⁺

THE NAPA VALLEY

Vine Trail Project Between Yountville and St. Helena

California Drive



Madison Street

THE NAPA VALLEY

Vine Trail Project Between Yountville and St. Helena



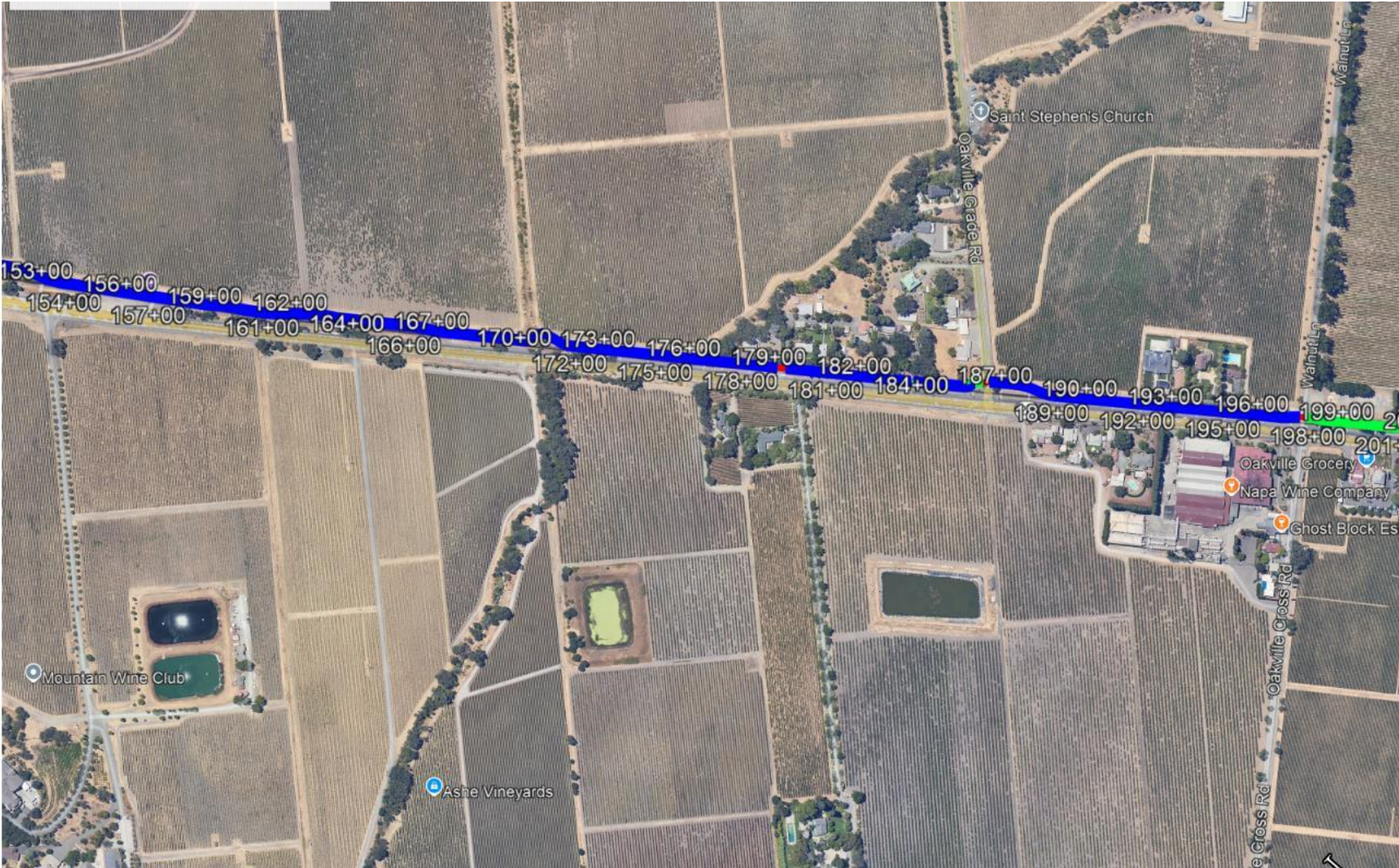
Dwyer
Road

Welcome
to Napa
Valley sign

THE NAPA VALLEY

Vine Trail Project Between Yountville and St. Helena

Welcome
to Napa
Valley sign



Oakville
Cross Road

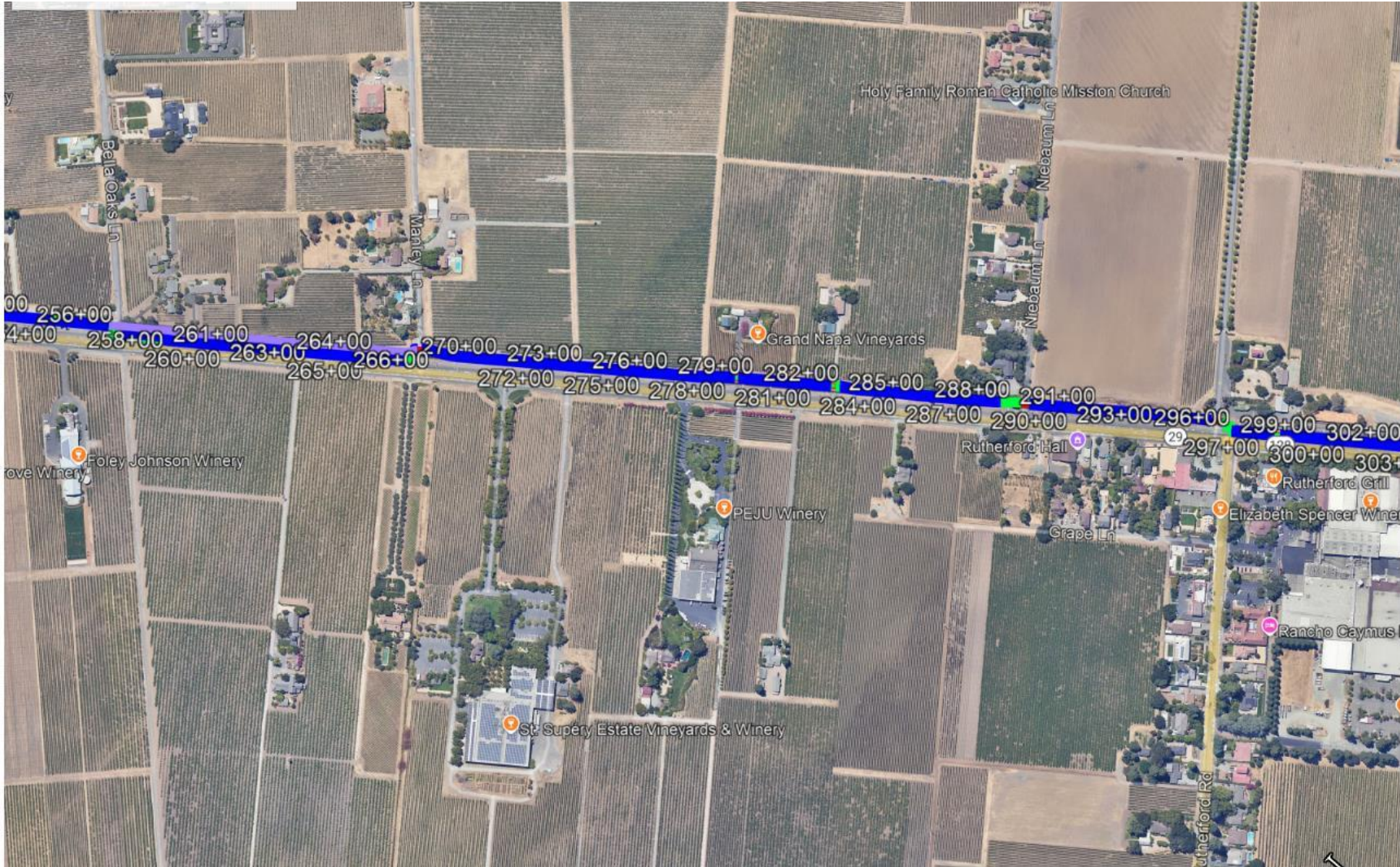
Kimley»Horn



THE NAPA VALLEY

Vine Trail Project Between Yountville and St. Helena

Bella Oaks Lane



Rutherford Road

Kimley»Horn



THE NAPA VALLEY

Vine Trail Project Between Yountville and St. Helena

Bale Slough



Whitehall Lane

